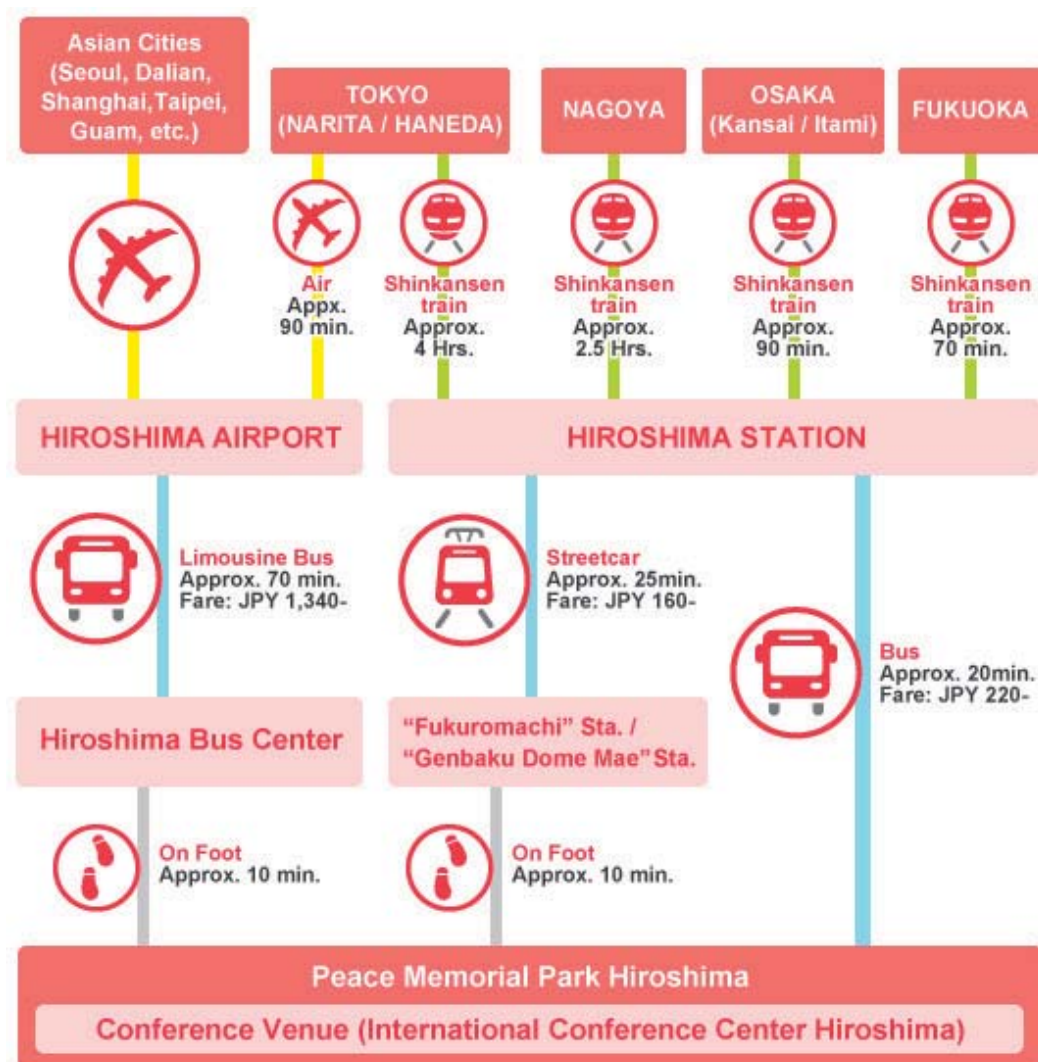


Access to Venue

Access to Hiroshima

Diagram for Easy Access to Venue



■From Hiroshima Airport

- By Limousine Bus About 70 minutes

From the airport, take the limousine bus bound for Hiroshima Bus Center from the 1st floor of the arrival gate, and get off at the Hiroshima Bus Center. From here, on foot about 10 minutes.

- By Taxi About 50 minutes

■From Hiroshima Station

- By Bus About 20 minutes

Take No. 24 Hiroshima Bus for "Yoshijima" from A-3 at the south exit of Hiroshima Station, and get off at "Peace Memorial Park."

- By Streetcar About 25 minutes

Take a streetcar for "Hiroshima-port(No.1)" and get off at "Fukuro-machi." From here, on foot about 10 minutes.

Take a streetcar for "Eba(No.6)" or "Miyajima-guchi(No.2)" and get off at "Genbaku Dome mae." From here, on foot about 10 minutes.

- By Taxi About 10 minutes

Access to Venue

■From Tokyo Airport (Narita International Airport(NRT) / Haneda Airport(HND)) to Hiroshima Station

- By domestic flight to Hiroshima Airport (approx. 90 minutes).
- By Narita Express to JR Tokyo or Shinagawa Station and transfer for Hiroshima to Shinkansen (approx. 240 minutes).

■From CHUBU CENTRAIR International Airport (NGO) to Hiroshima Station

- By Meitetsu μ -SKY to Nagoya Station (approx. 30 minutes) and transfer for Hiroshima to Shinkansen (approx. 140 minutes).

■From Kansai International Airport (KIX) to Hiroshima Station

- By JR-West Kansai International Airport Express HARUKA to Shin-Osaka Station (approx. 50 minutes) and transfer for Hiroshima to Shinkansen (approx. 90 minutes).

■From Fukuoka International Airport (FUK) to Hiroshima Station

- By Subway Airport Line to Hakata Station (approx. 15 minutes) and transfer for Hiroshima to Shinkansen (approx. 70 minutes).

Surrounding Area Map

